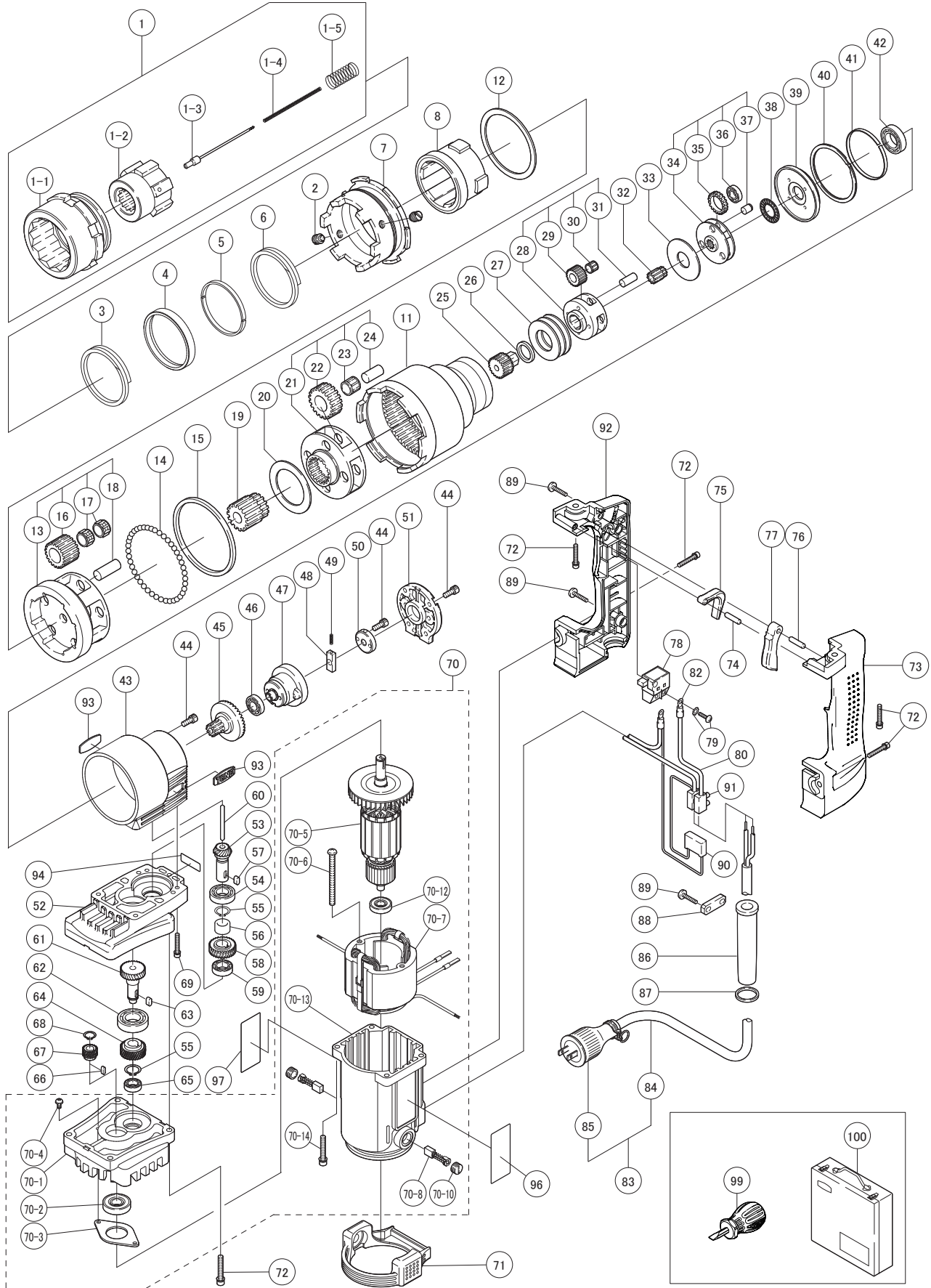


TONE-GX360ZA / GX361ZA

No. 1805



TONE-GX360ZA / GX361ZA

No. 1805



Part #	Description	Q'ty	Part #	Description	Q'ty
1-1	OUTER SOCKET	1	53	PINION BEVEL GEAR	1
1-2	INNER SOCKET	1	54	BEARING	1
1-3	EJECTOR PIN	1	55	RETAINING RING C-TYPE	2
1-4	EJECTOR SPRING	1	56	BUSH	1
1-5	SPRING	1	57	PARALLEL KEY	1
2	SET SCREW	2	58	HELICAL GEAR	1
3	SPIROLOX	1	59	BEARING	1
4	SPIRO STOPPER	1	60	PUSH ROD	1
5	SUB SPIRO STOPPER	1	61	HELICAL GEAR	1
6	SPIROLOX	1	62	BEARING	1
7	OUTER SOCKET HOLDER	1	63	PARALLEL KEY	1
8	INNER SOCKET HOLDER	1	64	HELICAL GEAR	1
11	INTERNAL GEAR	1	65	BEARING	1
12	BUSH	1	66	PARALLEL KEY	1
13	CAGE	1	67	HELICAL GEAR	1
14	STEEL BALL	51	68	RETAINING RING C-TYPE	1
15	BUSH	1	69	HSH BOLT W/H WASHER	4
16	IDLE GEAR	5	70	MOTOR	1
17	NEEDLE CAGE	10	70-1	BEARING BRACKET	1
18	GEAR PIN	5	70-2	BEARING	1
19	PINION GEAR	1	70-3	CLAMP	1
20	BUSH	1	70-4	CRPH SCREW W/H WASHER	2
21	CAGE	1	70-5	ROTOR	1
22	IDLE GEAR	4	70-6	TAPPING SCREW	2
23	NEEDLE CAGE	4	70-7	STATOR	1
24	GEAR PIN	4	70-8	CARBON BRUSH	2
25	PINION GEAR	1	70-10	BRUSH CAP	2
26	BUSH	1	70-12	BEARING	1
27	BUSH	3	70-13	STATOR SPIDER ASS'Y	1
28	CAGE	1	70-14	HSH BOLT W/H WASHER	4
29	IDLE GEAR	3	71	CUSHION RUBBER	1
30	NEEDLE CAGE	3	72	HSH BOLT W/H WASHER	8
31	GEAR PIN	3	73	GRIP	1
32	PINION GEAR	1	74	PARALLEL PIN	1
33	BUSH	1	75	EJECT LEVER	1
34	CAGE	1	76	PARALLEL PIN	1
35	IDLE GEAR	3	77	SWITCH LEVER	1
36	BEARING	3	78	TRIGGER SWITCH	1
37	GEAR PIN	3	79	CRPH SCREW	2
38	THRUST NEEDLE	1	79	SPRING WASHER	2
39	FRICTION DISK	1	80	CABLE ASSY	1
40	SPIROLOX	1	82	INSULATED TERMINAL	2
41	SPIRO WASHER	1	83	CORD ASS'Y	1
42	BEARING	1	86	CORD ARMOUR	1
43	HOUSING	1	87	BUSH	1
44	HSH BOLT	13	88	CLAMP	1
45	PINION GEAR	1	89	TAPPING SCREW	4
46	BEARING	1	90	CONDENSER	1
47	EJECTOR BRACKET	1	91	EUROPEAN TERMINAL	1
48	LATCH	1	92	GRIP COVER	1
49	LATCH SPRING	1	93	PLATE	2
50	LATCH GUIDE	1	96	RATING PLATE	1
51	HOUSING COVER	1	99	SCREW DRIVER	1
52	BRACKET	1	100	METAL CASE	1

Parts not listed are not available separately