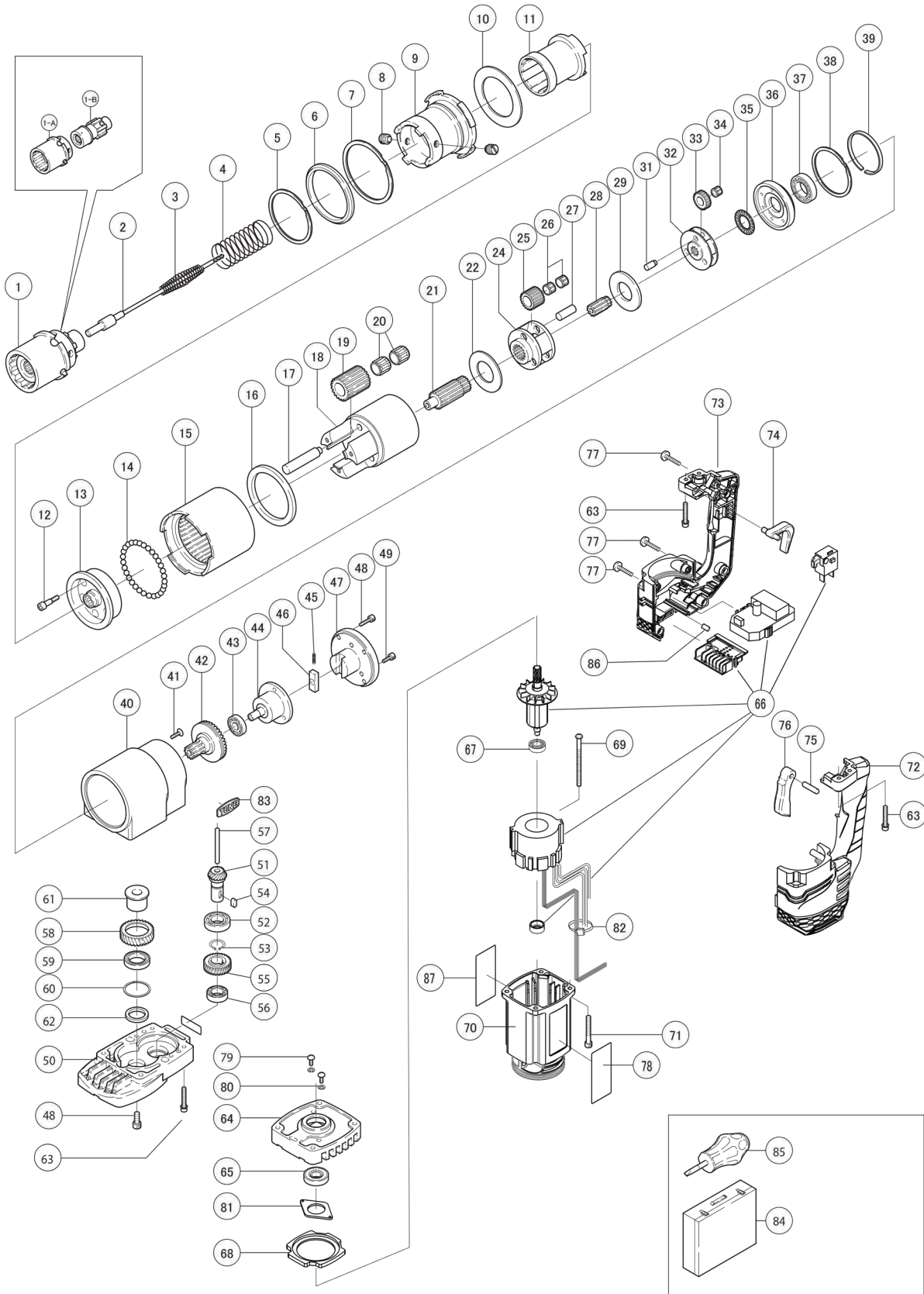


STONE CSS-60

No. 2106

GWY

ABSOLUTE ACCURACY



w: www.gwyinc.com
p: 888.838.6500
e: info@gwyinc.com

Recognized for quality, dependability, technical expertise.

TONE CSS-60

No. 2106



| Part # | Description | Q'ty |
|--------|-----------------------|------|
| 1-A | S SERIES OUTER SOCKET | 1 |
| 1-B | S SERIES INNER SOCKET | 1 |
| 2 | EJECTOR PIN | 1 |
| 3 | EJECTOR SPRING | 1 |
| 4 | INNER SOCKET SPRING | 1 |
| 5 | SPIROLOX | 1 |
| 6 | SPIRO STOPPER | 1 |
| 7 | SPIROLOX | 1 |
| 8 | SET SCREW | 2 |
| 9 | OUTER SOCKET HOLDER | 1 |
| 10 | THRUST WASHER | 1 |
| 11 | INNER SOCKET HOLDER | 1 |
| 12 | HSH REAMER BOLT | 3 |
| 13 | THIRD SPIDER | 1 |
| 14 | STEEL BALL | 34 |
| 15 | INTERNAL GEAR | 1 |
| 16 | BUSH | 1 |
| 17 | THIRD GEAR PIN | 3 |
| 18 | GEAR CASE | 1 |
| 19 | THIRD IDLE GEAR | 3 |
| 20 | NEEDLE CAGE | 6 |
| 21 | THIRD PINION GEAR | 1 |
| 22 | SECOND THRUST METAL | 1 |
| 24 | SECOND CAGE | 1 |
| 25 | SECOND IDLE GEAR | 3 |
| 26 | NEEDLE CAGE | 6 |
| 27 | SECOND GEAR PIN | 3 |
| 28 | SECOND PINION GEAR | 1 |
| 29 | FIRST THRUST METAL | 1 |
| 31 | FIRST GEAR PIN | 3 |
| 32 | FIRST CAGE | 1 |
| 33 | FIRST IDLE GEAR | 3 |
| 34 | NEEDLE CAGE | 3 |
| 35 | THRUST NEEDLE | 1 |
| 36 | FRICTION DISK | 1 |
| 37 | BEARING | 1 |
| 38 | SPIROLOX | 1 |
| 39 | SPIRO WASHER | 1 |
| 40 | HOUSING | 1 |
| 41 | CRPH SCREW M4x14 | 6 |
| 42 | PINION GEAR | 1 |
| 43 | BEARING | 1 |

| Part | Description | Q'ty |
|------|--------------------------|------|
| 44 | EJECTOR BRACKET | 1 |
| 45 | LATCH SPRING | 1 |
| 46 | LATCH | 1 |
| 47 | HOUSING COVER | 1 |
| 48 | HSH BOLT M4x12 | 5 |
| 49 | HSH BOLT M4x10 | 3 |
| 50 | BRACKET | 1 |
| 51 | PINION BEVEL GEAR | 1 |
| 52 | BEARING | 1 |
| 53 | RETAINING RING C-TYPE | 1 |
| 54 | PARALLEL KEY | 1 |
| 55 | HELICAL GEAR | 1 |
| 56 | BEARING | 1 |
| 57 | PUSH ROD | 1 |
| 58 | HELICAL GEAR | 1 |
| 59 | BEARING | 1 |
| 60 | SPIROLOX | 1 |
| 61 | STEPPED BUSH | 1 |
| 62 | BUSH | 1 |
| 63 | HSH BOLT w/ Washer M4x25 | 8 |
| 64 | BEARING BRACKET | 1 |
| 65 | BEARING | 1 |
| 66 | MOTOR ASSY | 1 |
| 67 | BEARING | 1 |
| 68 | FAN GUIDE | 1 |
| 69 | SCREW | 2 |
| 70 | MOTOR FRAME | 1 |
| 71 | HSH BOLT M4x32 | 4 |
| 72 | GRIP | 1 |
| 73 | GRIP COVER | 1 |
| 74 | EJECT LEVER | 1 |
| 75 | PARALLEL PIN | 1 |
| 76 | SWITCH LEVER | 1 |
| 77 | TAPPING SCREW M4x18 | 6 |
| 78 | RATING STICKER | 1 |
| 79 | CRPH SCREW M3x6 | 2 |
| 80 | SPRING WASHER M3 | 2 |
| 81 | BEARING SUPPORT | 1 |
| 82 | BANDING BAND | 1 |
| 83 | PLATE | 2 |
| 84 | METAL CASE | 1 |

Parts not listed are not available separately

w: www.gwyinc.com

p: 888.838.6500

e: info@gwyinc.com

Recognized for quality, dependability, technical expertise.