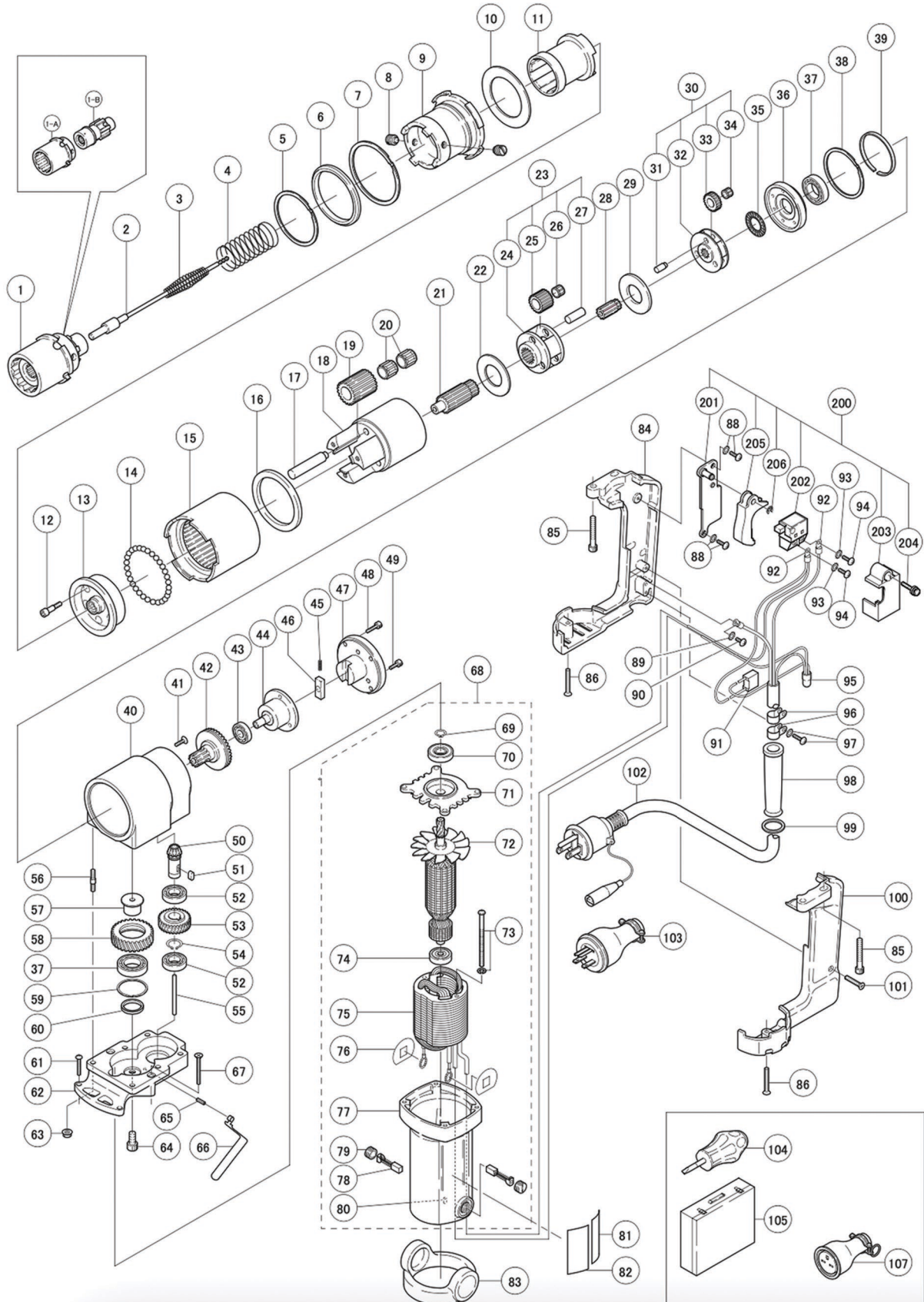


STONE S-60EZA

No. 1204

GWY

ABSOLUTE ACCURACY



w: www.gwyinc.com
p: 888.838.6500
e: info@gwyinc.com

Recognized for quality, dependability, technical expertise.

STONE S-60EZA

No. 1204



Part #	Description	Q'ty	Part #	Description	Q'ty
1-A	OUTER SOCKET	1	56	STUD BOLT	2
1-B	INNER SOCKET	1	57	IDLE PIN	1
2	EJECTOR PIN	1	58	MOTER IDLE GEAR	1
3	EJECTOR SPRING	1	59	SPIROLOX FRR-30	1
4	INNER SOCKET SPRING	1	60	BUSH 17X22X3.1	1
5	SPIROLOX FRS-56	1	61	CRPH SCREW M4X20	2
6	SPIRO STOPPER	1	62	BRACKET ASS'Y	1
7	SPIROLOX RR-262	1	63	E-NUT M5	2
8	SET SCREW	2	64	HSH BOLT M5X12	1
9	OUTER SOCKET HOLDER	1	66	EJECTOR LEVER	1
10	BUSH 45.2X66.5X2	1	67	CRFH SCREW M4X35	2
11	INNER SOCKET HOLDER ASS'Y	1	68A	MOTOR ASS'Y 115V	1
12	HSH REAMER BOLT	3	68B	MOTOR ASS'Y 220V	1
13	3RD SPIDER ASS'Y	1	69	RETAINING RING C-TYPE DIA 9	1
14	STEEL BALL 7/32"	34	70	METAL SLEEVE 629ZZ	1
15	INTERNAL GEAR	1	71	METAL SLEEVE BRACKET	1
16	BUSH 54X67X5	1	72A	ARMATURE 115V	1
17	3RD GEAR PIN	3	72B	ARMATURE 220V	1
18	GEAR CASE	1	73	CRPH SCREW M4X65 W/H WASHER	2
19	3RD IDLE GEAR	3	74	METAL SLEEVE 627ZZ	1
20	NEEDLE CAGE KT101415	6	75A	STATOR 115V	1
21	3RD PINION GEAR	1	75B	STATOR 220V	1
22	BUSH 24X45X2	1	76	INSULATING WASHER	2
23	2ND IDLE GEAR ASS'Y	1	77A	STATOR SPIDER ASS'Y 115V	1
24	2ND CAGE	1	77B	STATOR SPIDER ASS'Y 220V	1
25	2ND IDLE GEAR	3	78	CARBON BRUSH	2
26	NEEDLE CAGE KT8128	6	79	BRUSH CAP	2
27	2ND GEAR PIN	3	80	RUBBER PLUG	1
28	2ND PINION GEAR	1	81	WARNING LABEL	1
29	BUSH 20X45X2	1	82A	RATING PLATE 115V	1
30	1ST IDLE GEAR ASS'Y	1	82B	RATING PLATE 220V	1
31	1ST GEAR PIN	3	83	CUSHION RUBBER	1
32	1ST CAGE	1	84	GRIP	1
33	1ST IDLE GEAR	3	85	HSH BOLT M5X35	4
34	NEEDLE CAGE KT697	3	86	CRFH SCREW M4X30	2
35	METAL SLEEVE NTB1528	1	88	CRPH SCREW M4X6 W/H WASHER	2
36	FRICTION DISK	1	89	TEETH WASHER M4	1
37	METAL SLEEVE 6903	2	90	CRPH SCREW M4X4	1
38	SPIROLOX RR-206	1	91	CONDENSER PAB 104	1
39	SPIRO WASHER	1	92	INSULATED TERMINAL TMEV2-4	3
40	HOUSING	1	93	TEETH WASHER M3.5	2
41	CRFH SCREW M4X14	6	94	CRPH SCREW M3.5X6	2
42	1ST PINION GEAR	1	95	INSULATED CONNECTOR 2-SD	1
43	METAL SLEEVE 6900	1	96	CORD CLAMP	2
44	EJECTOR BRACKET	1	97	CRPH SCREW M4X10 W/H WASHER	2
45	LATCH SPRING	1	98	CORD ARMOUR	1
46	LATCH	1	99	CORD ARMOUR WASHER	1
47	HOUSING COVER	1	100	GRIP COVER	1
48	HSH BOLT M4X14	4	101	CRFH SCREW M4X22	1
49	HSH BOLT M4X10	3	102A	CORD ASS'Y 115V	1
50	PINION BEVEL GEAR	1	102B	CORD ASS'Y 220V	1
51	KEY	1	103	PLUG 220V	1
52	METAL SLEEVE 6901	2	104	SCREW DRIVER	1
53	MOTOR GEAR	1	105	METAL CASE	1
54	RETAINING RING C-TYPE DIA12	1	107	CONNECTOR 220V	1
55	PUSH ROD	1	200	TRIGGER SWITCH KIT	1

Parts not listed are not available separately

w: www.gwyinc.com

p: 888.838.6500

e: info@gwyinc.com

Recognized for quality, dependability, technical expertise.