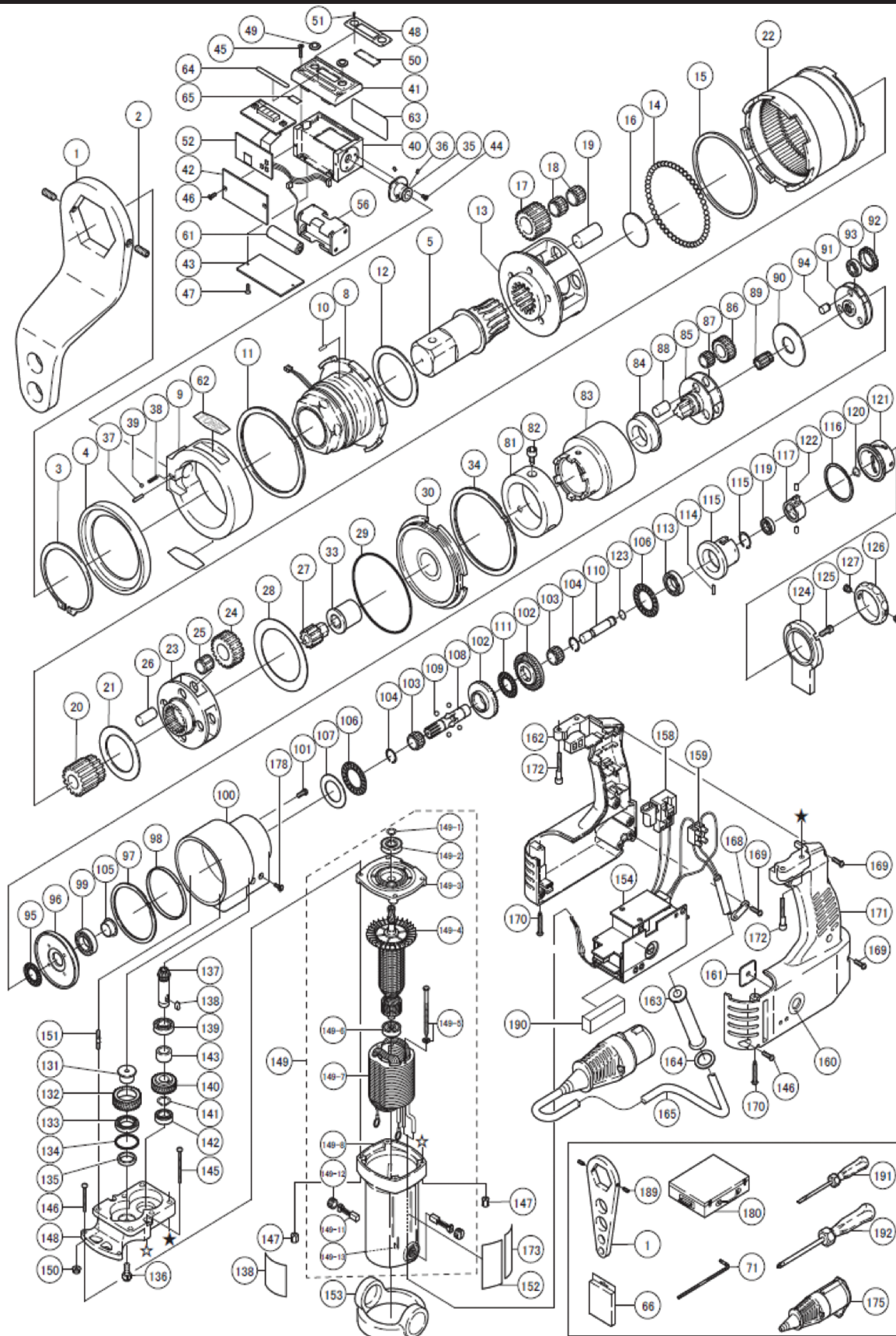


STONE PDX-501F

No. 1601

GWY

ABSOLUTE ACCURACY



w: www.gwyinc.com
p: 888.838.6500
e: info@gwyinc.com

Recognized for quality, dependability, technical expertise.

TONE PDX-501F

No. 1601



Part #	Description	Q'ty	Part #	Description	Q'ty
1	Straight-Type Reaction Plate	1	108	1st Pinion Gear	1
1	L-Type Reaction Plate	1	109	Steel Ball 7/32"	4
2	Piked HSH Set Screw	2	110	Change Spool	1
3	Retain Rings C-type	1	111	Thrust Needle Bearing	1
4	Cell Cover B	1	112	Circlip	1
5	Square Drive	1	113	Bearing	1
8	Torque Coll	1	114	Needle Pin	1
9	Cell Cover A	1	115	Spool Guide	1
10	Parallel Pin	2	116	Spirolox	1
11	Spirolox	1	117	Spool Holder	1
12	Bush	1	118	Retaining Ring C-Type	1
13	4th Cage	1	119	Bearing	1
14	Steel Ball 6mm	51	120	Retaining Ring C-Type	1
15	Bush	1	121	Change Drum	1
16	Bush	1	122	Guide Pin	2
17	4th Idle Gear	5	123	Circlip	1
18	Needle Cage	10	124	Housing Cover	1
19	4th Gear Pin	5	125	HSH Bolt	4
20	Pinion Gear	1	126	Change Grip	1
21	Bush	1	127	Click Plunger Ass'y	2
22	Internal Gear	1	131	Idle Pin	1
23	3rd Cage	1	132	Helical Gear	1
24	3rd Idle Gear	4	133	Bearing	1
25	Needle Cage	4	134	Spirolox	1
26	3rd Gear Pin	4	135	Bush	1
27	3rd Pinion Gear	1	136	HSH Button Bolt	1
28	Thrust Washer	1	137	Pinion Bevel Gear	1
29	O-Ring	1	138	Parallel Key	1
30	Rear Flange Ass'y	1	139	Bearing	1
33	Input Adaptor	1	140	Helical Gear	1
34	Spirolox	1	141	Retain Rings C-type	1
35	Turn Shaft	1	142	Bearing	1
36	Spring Pin	2	143	Bush	1
37	Needle Roller	1	145	CRPH Screw	2
38	Steel Ball 4mm	1	146	CRPH Screw	2
39	Spring	1	147	Steel Spacer	4
40	Display Case	1	148	Bracket	1
41	Display Cover A	1	149	Motor Ass'y	1
42	Display Cover B	1	149	Motor Ass'y	1
43	Display Cover C	1	149-1	Retain Rings C-type	1
44	CRFH Screw	3	149-2	Bearing	1
45	Flat End HSH Bolt	2	149-3	Bearing Bracket Ass'y	1
46	Flat End HSH Bolt	2	149-4	Armature	1
47	CRFH Screw	2	149-4	Armature	1
48	Torque Unit Plate	1	149-5	CRPH Screw(W/H Washer)	2
48	Torque Unit Plate	1	149-6	Bearing	1
49	Button	2	149-7	Stator	1
50	Plate	1	149-7	Stator	1
51	Rivet	4	149-8	Stator Spider Ass'y	1
52	CPU	1	149-8	Stator Spider Ass'y	1
56	Battery Holder	1	149-11	Carbon Brush	2
61	AA Battery	4	149-12	Brush Cap	2
62	Logo Plate	2	149-13	Rubber Plug	1
63	Display Rating Plate A	1	150	E-Nut	2
64	Model ID Plate	1	151	Stud Bolt	2
65	SD Slot Warning Lable	1	152	Rating Plate	1
66	Micro SD Card Set	1	152	Rating Plate	1
71	Hex Key Wrench 5mm	1	153	Cushion Rubber	1
81	Cover	1	154	Control Box Ass'y	1
82	HSH Set Bolt	3	154	Control Box Ass'y	1
83	Gear Case	1	158	Trigger Switch	1
85	2nd Cage	1	159	European Terminal	1
86	2nd Idle Gear	3	160	Graduation	1
87	Needle Cage	3	161	LED Cover	1
88	2nd Gear Pin	3	162	Grip	1
89	2nd Pinion Gear	1	163	Cord Armour	1
90	Bush	1	164	Bush	1
91	1st Cage	1	165	Cord Ass'y	1
92	1st Idle Gear	3	165	Cord Ass'y	1
93	Bearing	3	168	Cord Clamp	1
94	1st Gear Pin	3	169	CRPH Screw	6
95	Thrust Needle Bearing	1	170	CRPF Tap Screw	2
96	Friction Disk	1	171	Grip Cover	1
97	Spirolox	1	172	HSH Bolt	4
98	Spiro Washer	1	173	Warning Label	1
99	Bearing	1	175	Connector	1
100	Housing	1	175	Connector	1
101	CRPH Screw	4	178	CRFH Screw	4
102	Bevel Gear	2	180	Metal Case	1
103	Needle Cage	2	189	Piked HSH Set Screw	2
104	Circlip	1	190	Cushion Sponge	1
105	Stepped Bush	1	191	Mini Screw Driver	1
106	Thrust Needle Bearing	2	192	SCREW DRIVER	1
107	Thrust Washer	1			

Parts not listed are not available separately

w: www.gwyinc.com
 p: 888.838.6500
 e: info@gwyinc.com

Recognized for quality, dependability, technical expertise.