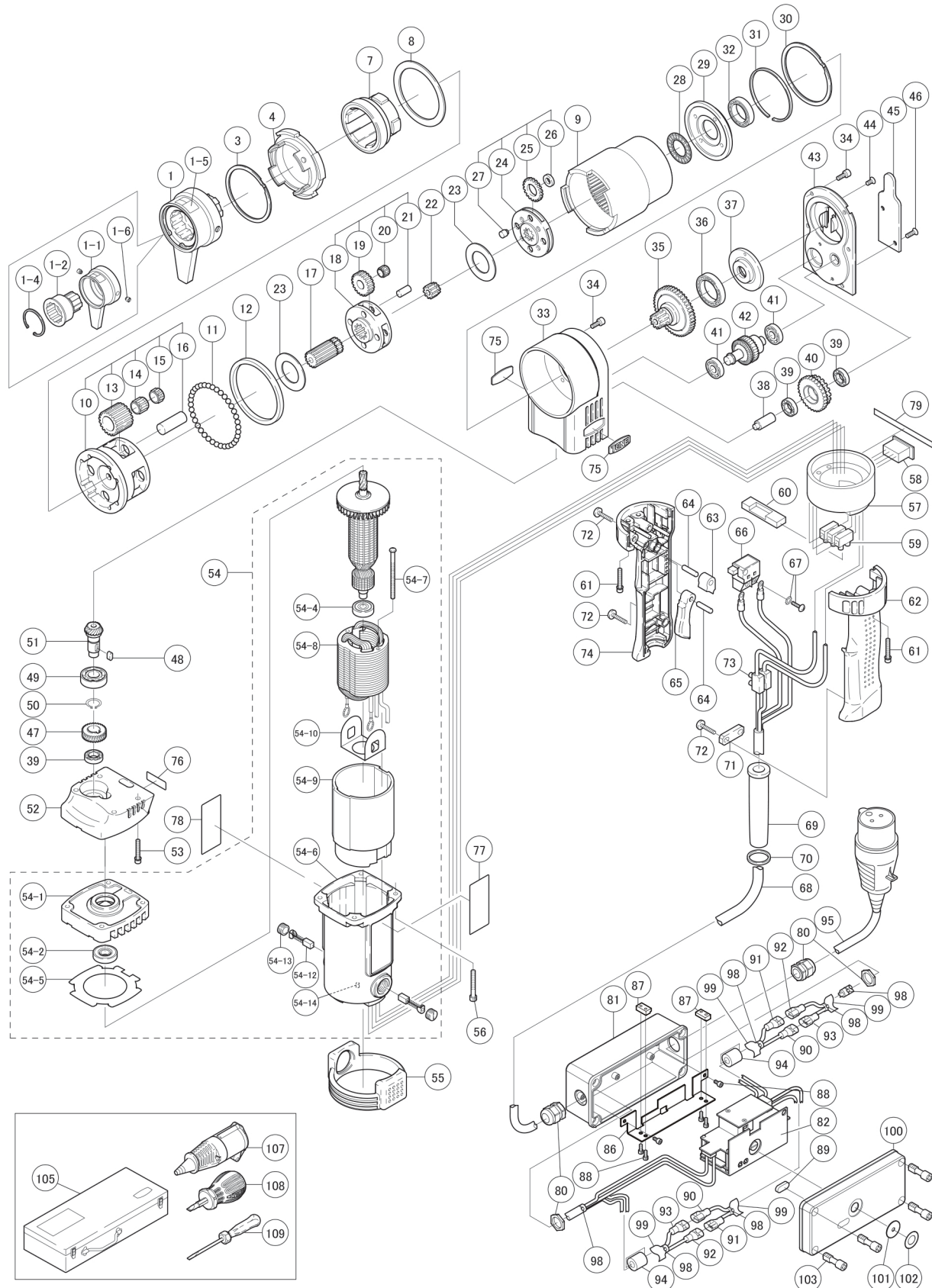


# ZONE GNBC-121E

No. 1707

# GWY

ABSOLUTE ACCURACY



w: [www.gwyinc.com](http://www.gwyinc.com)  
p: 888.838.6500  
e: [info@gwyinc.com](mailto:info@gwyinc.com)

Recognized for quality, dependability, technical expertise.

# ONE GNBC-121E

No. 1707



Part #	Description	Q'ty
1	BAR SOCKET	1
1-5	WARNING LABEL	1
1-6	SCREW	2
3	SPIROLOX	1
4	OUTER SOCKET HOLDER	1
7	INNER SOCKET HOLDER	1
8	BUSH	1
9	INTERNAL GEAR	1
10	CAGE	1
11	STEEL BALL	39
12	BUSH	1
13	IDLE GEAR	4
14	NEEDLE CAGE	4
15	NEEDLE CAGE	4
16	GEAR PIN	4
17	PINION GEAR	1
18	CAGE	1
19	IDLE GEAR	4
20	NEEDLE CAGE	4
21	GEAR PIN	4
22	PINION GEAR	1
23	THRUST WASHER	2
24	CAGE	1
25	IDLE GEAR	4
26	BUSH	4
27	GEAR PIN	4
28	THRUST NEEDLE	1
29	FRICTION DISK	1
30	SPIROLOX	1
31	SPIRO WASHER	1
32	BEARING	1
33	HOUSING	1
34	HSH BOLT	10
35	PINION GEAR	1
36	BEARING	1
37	LATCH GUIDE	1
38	GEAR PIN	1
39	BEARING	3
40	PINION GEAR	1
41	BEARING	2
42	PINION GEAR	1
43	HOUSING COVER	1
44	CRFH SCREW	1
45	LATCH COVER	1
46	CRFH SCREW	2
47	HELICAL GEAR	1
48	PARALLEL KEY	1
49	BEARING	1
50	RETAINING RING C-TYPE	1
51	PINION BEVEL GEAR	1
52	BRACKET	1
53	HSH BOLT W/H WASHER	4
54	MOTOR 120V	1
54	MOTOR 230V	1
54-1	BEARING BRACKET	1
54-2	BEARING	1
54-3	ARMATURE	1
54-3	ARMATURE	1
54-4	BEARING	1
54-5	FAN GUIDE	1
54-6	STATOR SPIDER ASS'Y	1

Part #	Description	Q'ty
54-7	TAPPING SCREW	2
54-8	STATOR	1
54-8	STATOR	1
54-9	INSULATED SLEEVE	1
54-10	INSULATED WASHER	1
54-12	CARBON BRUSH	2
54-13	BRUSH CAP	2
54-14	RUBBER PLUG	1
55	CUSHION RUBBER	1
56	HSH BOLT	4
57	GRIP SPACER	1
58	CHANGE SWITCH ASS'Y	1
59	EUROPEAN TERMINAL	1
60	PLATE	1
61	HSH BOLT	4
62	FRICTION DISK	1
63	COVER	1
64	PARALLEL PIN	2
65	SWITCH LEVER	1
66	TRIGGER SWITCH	1
67	CRPH SCREW	2
67	SPRING WASHER	2
68	CABLE ASSY	1
69	CORD ARMOUR	1
70	BUSH	1
71	CLUMP	1
72	TAPPING SCREW	4
73	EUROPEAN TERMINAL	1
74	GRIP COVER	1
75	PLATE	2
76	SERIAL NUMBER PLATE	1
77	NAME PLATE FOR GNBC121E-CE	1
77	NAME PLATE FOR GNBC122E-CE	1
78	WARNING LABEL	1
79	STICKER	1
80	CABLE GLAND	2
81	CASE	1
82	CONTROL BASE ASSY	1
82	CONTROL BASE ASSY	1
86	BASE	1
87	PLATE	2
88	HSH BOLT	6
89	COVER	1
90	CONNECTOR	2
91	CONNECTOR	2
92	CONNECTOR	2
93	CONNECTOR	2
94	RING CORE	2
95	CORD ASS'Y	1
95	CORD ASS'Y	1
98	BANDING BAND	7
99	TUBE	4
100	CASE COVER	1
101	DIAL COVER	1
102	GRADUATION	1
103	SCREW	4
105	METAL CASE	1
107	CONNECTOR 115V CE	1
107	CONNECTOR 240V CE	1
108	SCREW DRIVER	1
109	SCREW DRIVER	1

Parts not listed are not available separately

w: [www.gwyinc.com](http://www.gwyinc.com)  
 p: 888.838.6500  
 e: [info@gwyinc.com](mailto:info@gwyinc.com)

Recognized for quality, dependability, technical expertise.