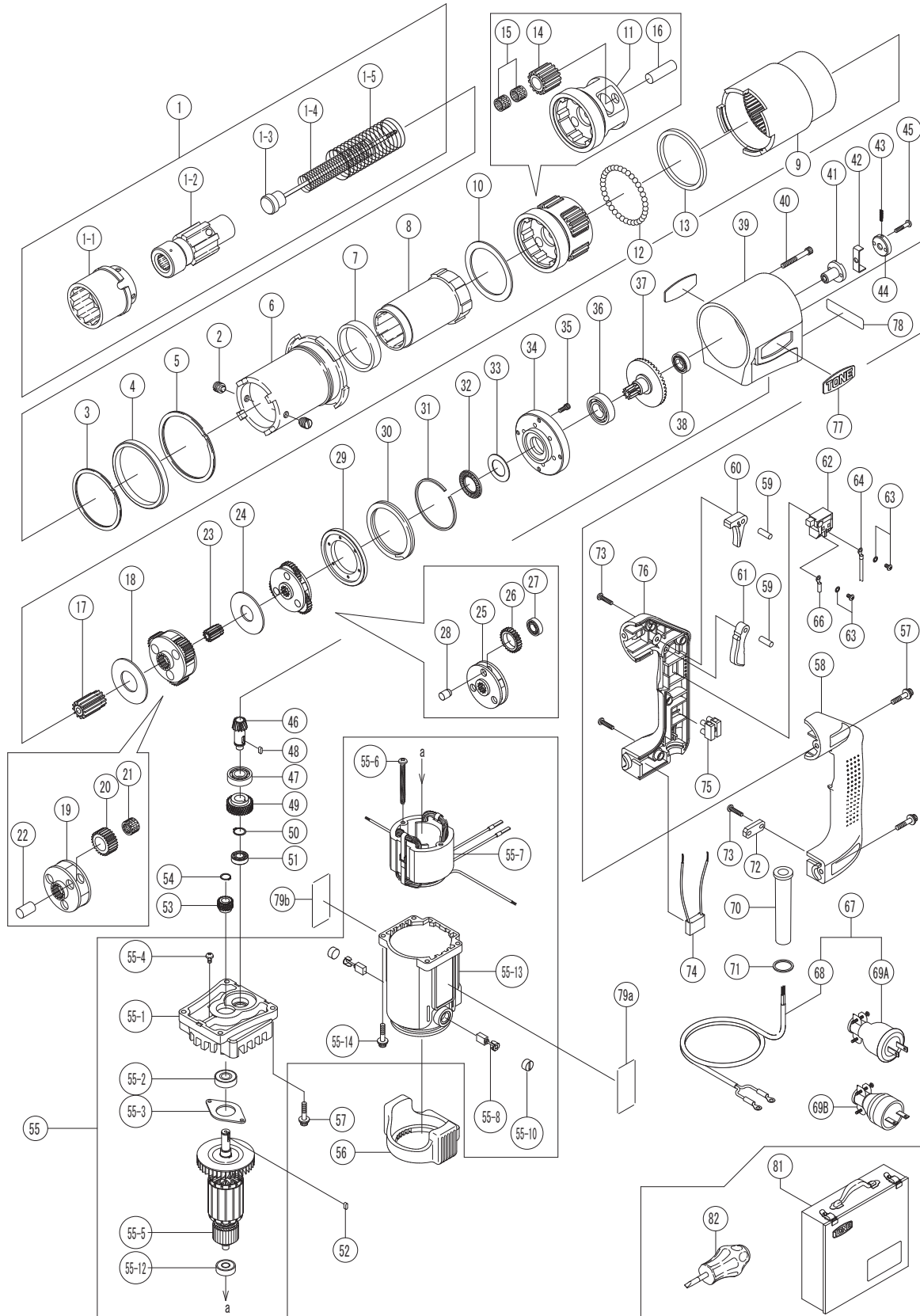


# STONE GS-91EZ

No. 1311

# GWY

ABSOLUTE ACCURACY



# TONE GS-91EZ

No. 1311



Part #	Description	Q'ty
1-1	OUTER SOCKET	1
1-2	INNER SOCKET	1
1-3	EJECTOR PIN	1
1-4	EJECTOR SPRING	1
1-5	INNER SOCKET SPRING	1
2	SET SCREW	2
3	SPIROLOX	1
4	SPIRO STOPPER	1
5	SPIROLOX	1
6	OUTER SOCKET HOLDER	1
7	BUSH	1
8	INNER SOCKET HOLDER	1
9	INTERNAL GEAR	1
10	BUSH	1
11	3 <sup>RD</sup> CAGE	1
12	STEEL BALL	35
13	BUSH	1
14	3 <sup>RD</sup> IDLE GEAR	4
15	NEEDLE CAGE	8
16	3 <sup>RD</sup> GEAR PIN	4
17	3 <sup>RD</sup> PINION GEAR	1
18	BUSH	1
19	2 <sup>ND</sup> CAGE	1
20	2 <sup>ND</sup> IDLE GEAR	3
21	NEEDLE CAGE	3
22	2 <sup>ND</sup> GEAR PIN	3
23	2 <sup>ND</sup> PINION GEAR	1
24	BUSH	1
25	1 <sup>ST</sup> CAGE	1
26	1 <sup>ST</sup> IDLE GEAR	3
27	BEARING	3
28	1 <sup>ST</sup> GEAR PIN	3
29	FRICTION DISK	1
30	SPIROLOX	1
31	SPIRO WASHER	1
32	BEARING	1
33	THRUST WASHER	1
34	FLANGE	1
35	HSH BOLT M4X10	6
36	BEARING	1
37	1 <sup>ST</sup> PINION GEAR	1
38	BEARING	1
39	HOUSING	1
40	HSH BOLT M5X40	4
41	EJECTOR BRACKET	1
42	LATCH	1
43	LATCH SPRING	1
44	LATCH GUIDE	1
45	CRPH SCREW M4X20	2
46	PINION BEVEL GEAR	1
47	BEARING	1

Part #	Description	Q'ty
48	KEY	1
49	MOTOR GEAR	1
50	RETAINING RING C-TYPE	1
51	BEARING	1
52	KEY	1
53	MOTOR IDLE GEAR	1
54	RETAINING RING C-TYPE	1
55A	MOTOR ASS'Y 115V	1
55B	MOTOR ASS'Y 220V	1
55-1	BEARING BRACKET	1
55-2	BEARING	1
55-3	PLATE	1
55-4	CRPH SCREW M4X8 W/WASHER	2
55-5A	ARMATURE 115V	1
55-5B	ARMATURE 220V	1
55-6	TAP SCREW M5X60	2
55-7A	STATOR 115V	1
55-7B	STATOR 220V	1
55-8	CARBON BRUSH	2
55-10	BRUSH CAP	2
55-12	BEARING	1
55-13	STATOR SPIDER	1
55-14	HSH BOLT M5X25 W/ WASHER	4
56	CUSHION RUBBER	1
57	HSH BOLT M5X25 W/ WASHER	8
58	GRIP	1
59	PIN	2
60	EJECTOR LEVER	1
61	SWITCH LEVER	1
62	TRIGGER SWITCH	1
63	CRPH SCREW M3.5X6 W/ WASHER	2
64	LEAD WIRE BROWN	1
66	INSULATED TERMINAL	2
67A	CORD ASS'Y 115V	1
67B	CORD ASS'Y 220V	1
68	CABLE	1
69A	PLUG 115V	1
69B	PLUG 220V	1
70	CORD ARMOUR	1
71	BUSH	1
72	CORD CLAMP	1
73	CRPH TAP TIGHT 4X18	6
74	CONDENSER	1
75	EUROPEAN TERMINAL	1
76	GRIP COVER	1
77	LOGO PLATE	2
78	SERIAL NUMBER PLATE	1
79a-1	RATING PLATE 115V - FRONT	1
79a-2	RATING PLATE 220V - FRONT	1
79b	RATING PLATE - BACK	1
81	METAL CASE	1

Parts not listed are not available separately