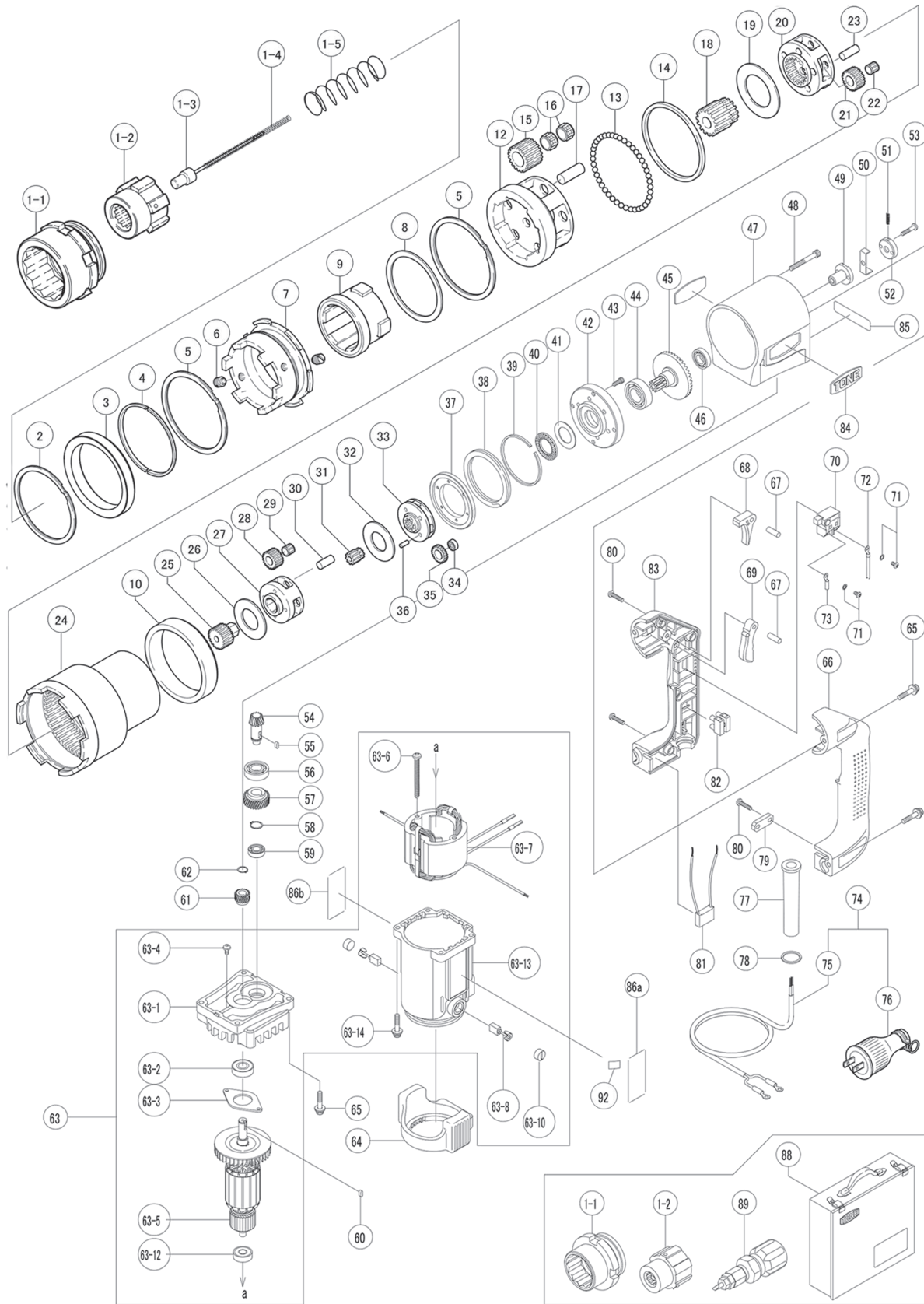


STONE GV-301ZA

No. 1812

GWY

ABSOLUTE ACCURACY



w: www.gwyinc.com
p: 888.838.6500
e: info@gwyinc.com

Recognized for quality, dependability, technical expertise.

TONE GV-301ZA

No. 1812



Part #	Description	Q'ty
1-1	OUTER SOCKET	1
1-2	INNER SOCKET	1
1-3	EJECTOR PIN	1
1-4	EJECTOR SPRING	1
1-5	INNER SOCKET SPRING	1
2	SPIROLOX	1
3	SPIRO STOPPER	1
4	SUB SPIRO STOPPER	1
5	SPIROLOX	2
6	SET SCREW	2
7	OUTER SOCKET HOLDER	1
8	BUSH	1
9	INNER SOCKET HOLDER	1
10	BUSH	1
12	CAGE	1
13	STEEL BALL	46
14	BUSH	1
15	IDLE GEAR	5
16	NEEDLE CAGE	10
17	GEAR PIN	5
18	PINION GEAR	1
19	BUSH	1
20	CAGE	1
21	IDLE GEAR	5
22	NEEDLE CAGE	5
23	GEAR PIN	5
24	INTERNAL GEAR	1
25	PINION GEAR	1
26	BUSH	1
27	CAGE	1
28	IDLE GEAR	3
29	NEEDLE CAGE	3
30	GEAR PIN	3
31	PINION GEAR	1
32	BUSH	1
33	CAGE	1
34	BEARING	3
35	IDLE GEAR	3
36	GEAR PIN	3
37	FRICTION DISK	1
38	SPIROLOX	1
39	SPIRO WASHER	1
40	THRUST NEEDLE	1
41	THRUST WASHER	1
42	FLANGE	1
43	HSH BOLT	6
44	BEARING	1
45	PINION GEAR	1
46	BEARING	1
47	HOUSING	1
48	HSH BOLT	4

Part #	Description	Q'ty
49	EJECTOR BRACKET	1
50	LATCH	1
51	LATCH SPRING	1
52	LATCH GUIDE	1
53	CRPH SCREW	2
54	PINION BEVEL GEAR	1
55	PARALLEL KEY	1
56	BEARING	1
57	HELICAL GEAR	1
58	RETAINING RING C-TYPE	1
59	BEARING	1
60	PARALLEL KEY	1
61	HELICAL GEAR	1
62	RETAINING RING C-TYPE	1
63	MOTOR FOR 120V	1
63-1	BEARING BRACKET	1
63-2	BEARING	1
63-3	CLUMP	1
63-4	CRPH SCREW W/H WASHER	2
63-5	ARMATURE FOR 120V	1
63-6	TAPPING SCREW	2
63-7	STATOR FOR 120V	1
63-8	CARBON BRUSH	2
63-10	BRUSH CAP	2
63-12	BEARING	1
63-13	STATOR SPIDER ASS'Y	1
63-14	HSH BOLT W/H WASHER	4
64	CUSHION RUBBER	1
65	HSH BOLT W/H WASHER	8
66	GRIP	1
67	PARALLEL PIN	2
68	EJECT LEVER	1
69	SWITCH LEVER	1
70	TRIGGER SWITCH	1
71	CRPH SCREW	2
71	SPRING WASHER	2
72	CABLE ASSY BROWN	1
74	CORD ASS'Y FOR 120V	1
75	CABTYRE CABLE	1
76	PLUG	1
77	CORD ARMOUR	1
78	BUSH	1
79	CLAMP	1
80	TAPPING SCREW	6
81	CAPACITOR	1
82	EUROPEAN TERMINAL	1
83	GRIP COVER	1
86a	RATING PLATE	1
86b	WARNING LABEL	1
88	METAL CASE	1

Parts not listed are not available separately